





- WALKWAY
- Creek
- Hill

Engineering School

Broad Area

Tech. Building

Brd

Park

1st Ave

Park St

Main Rd.

Mix Rd.

1st Ave

Kitts Blvd

Pin Dr.

1st Ave

1st Ave

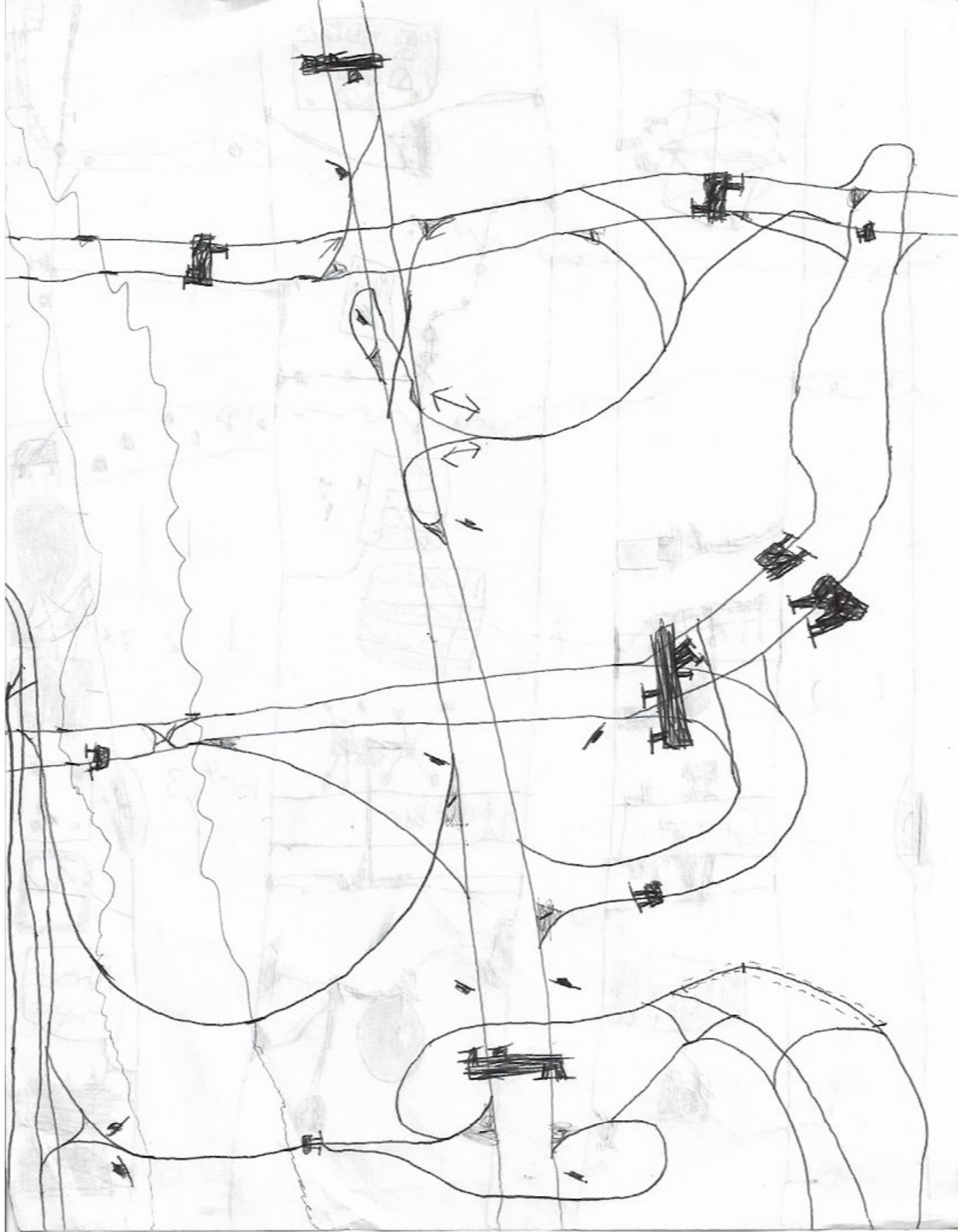
1st Ave

1st Ave

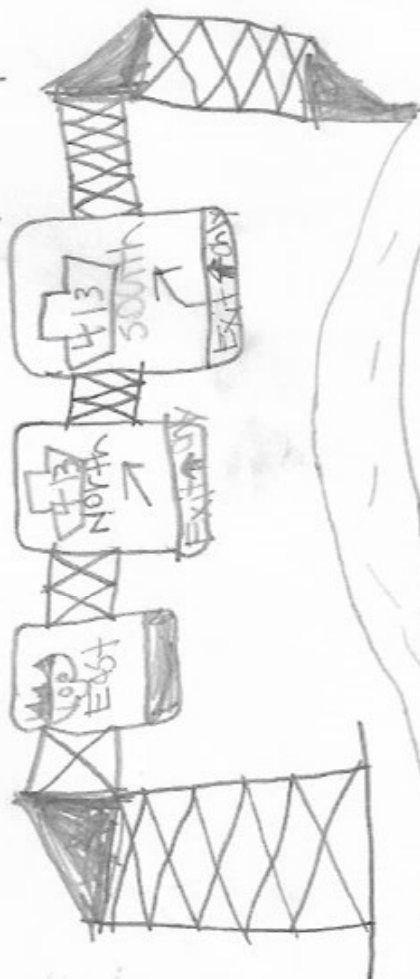
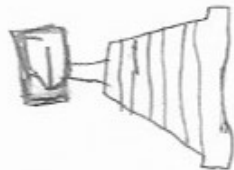
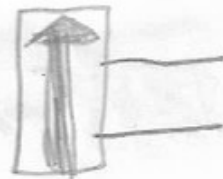
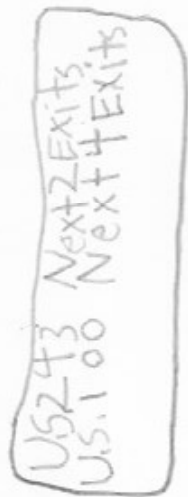
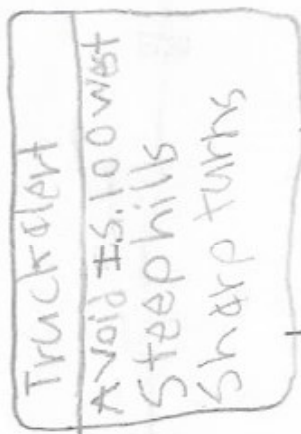
1st Ave

1st Ave

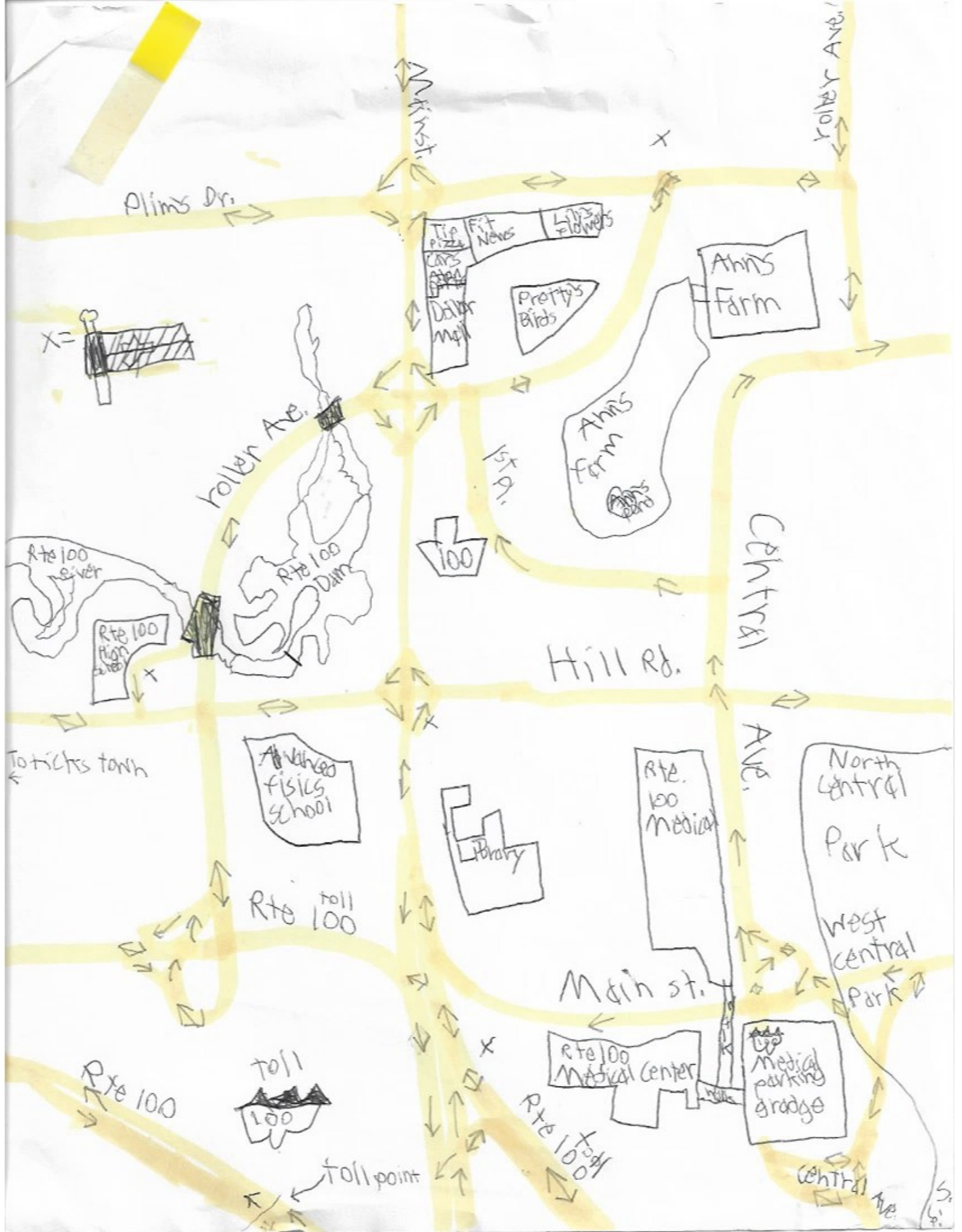
Page 2

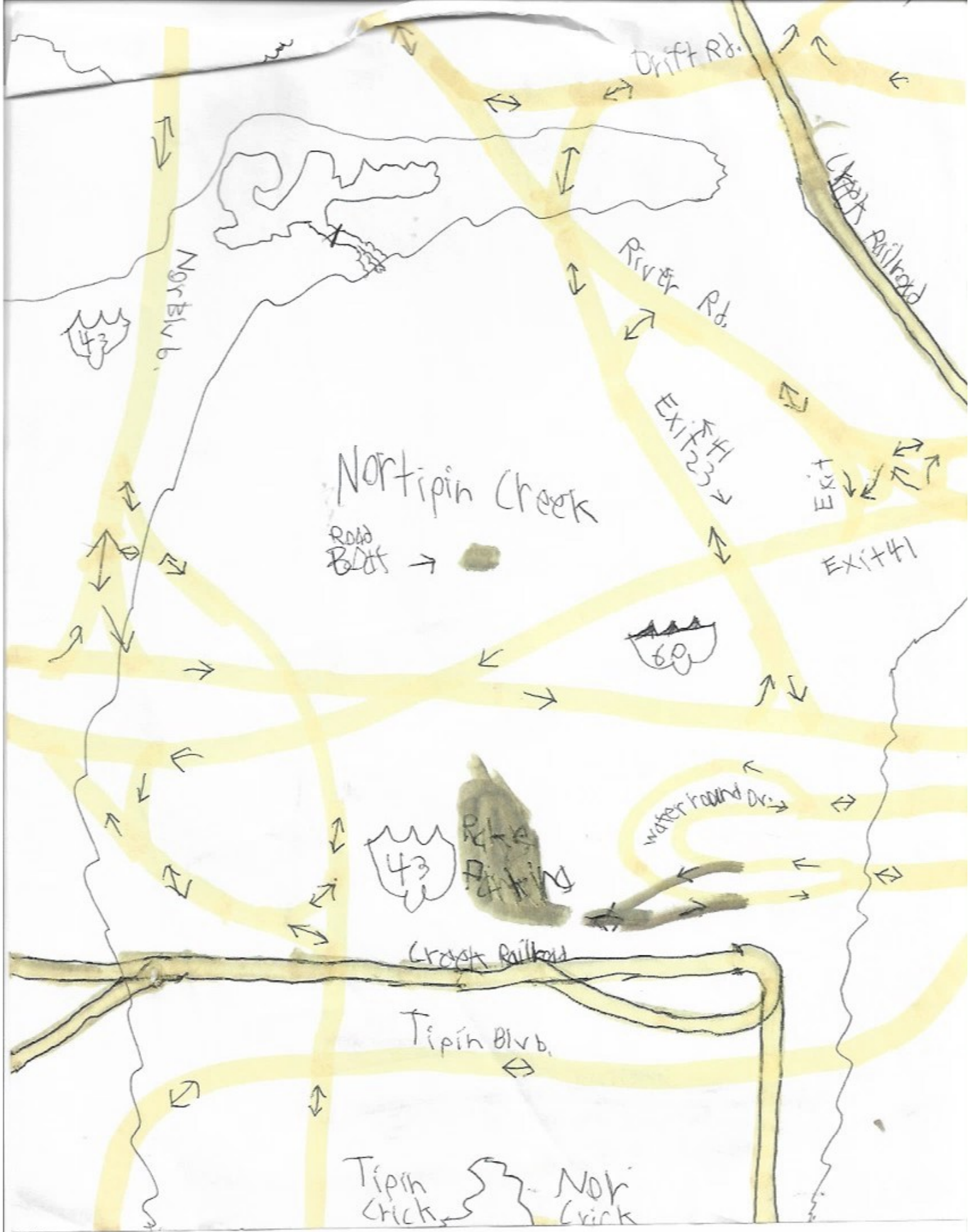


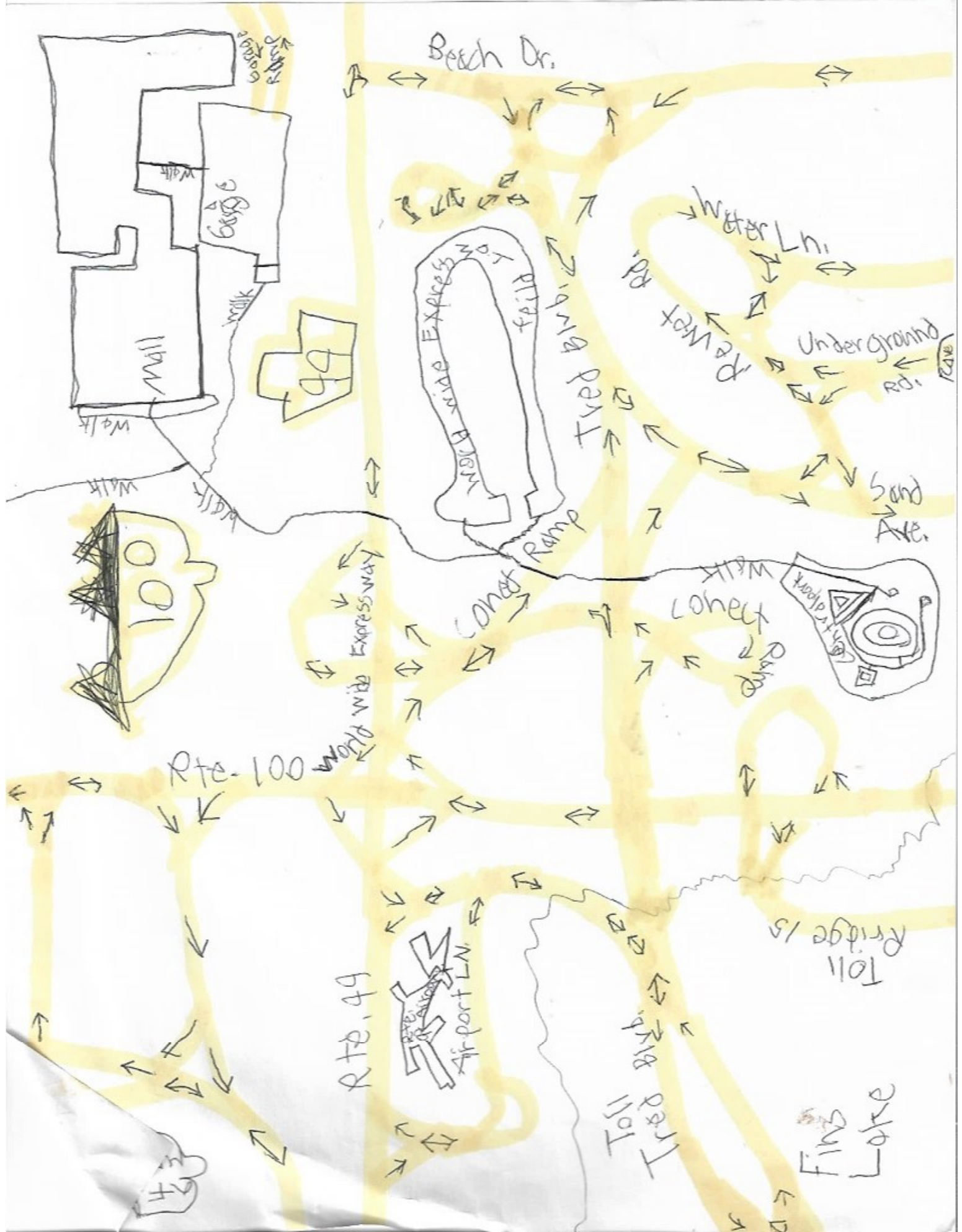
Highway signs

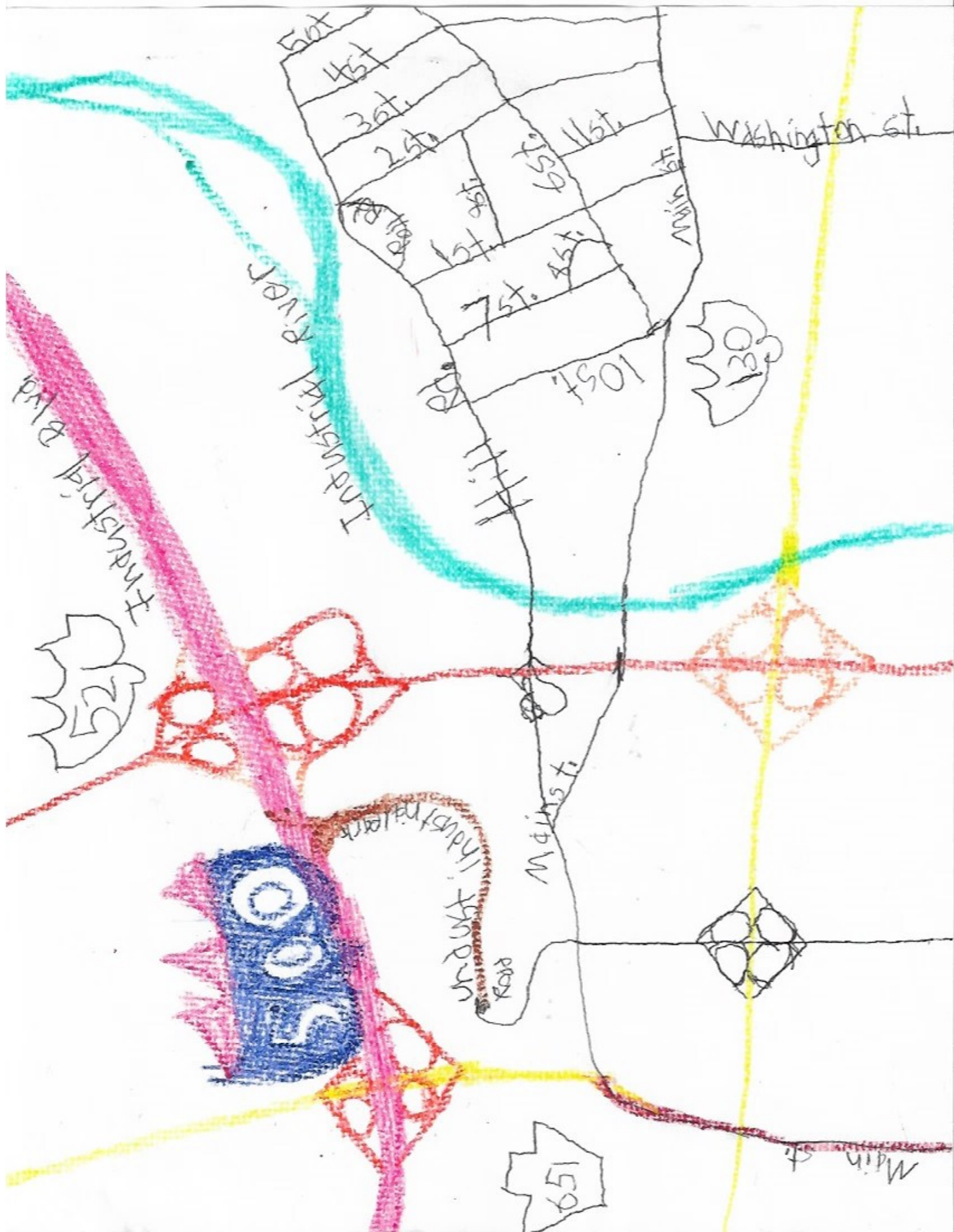


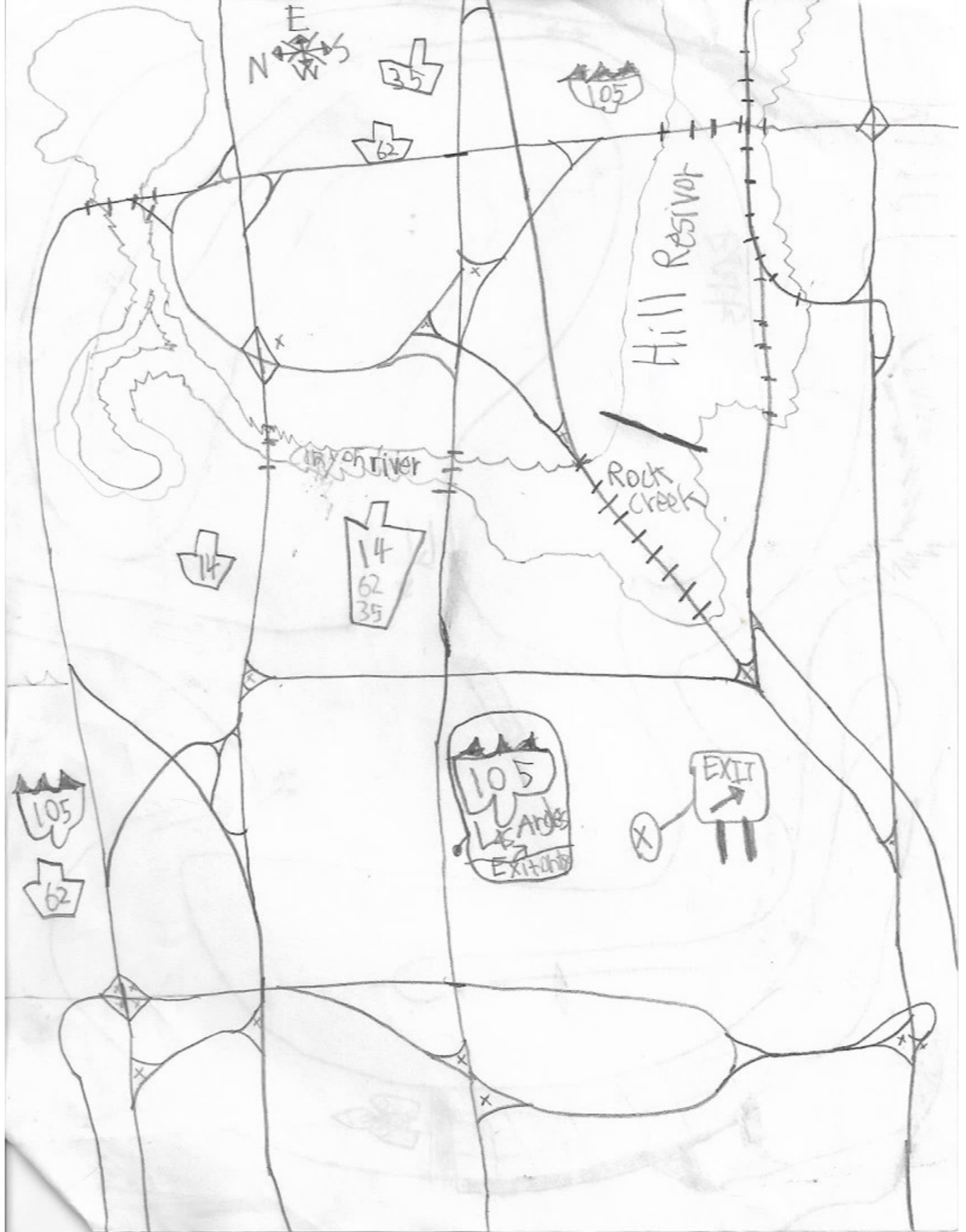
512 feet











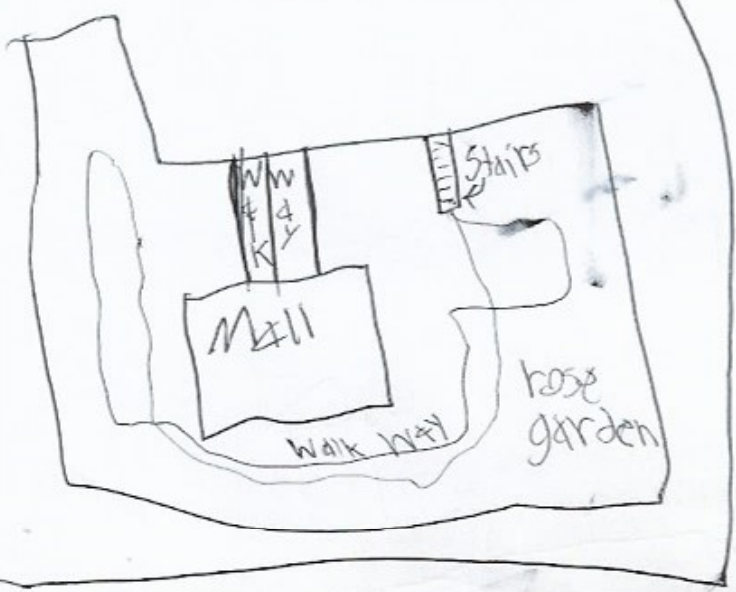
World
Wide

Building

World wide

Expressway

World wide
plan



World wide
buildings

World wide
build.

World wide
expressway

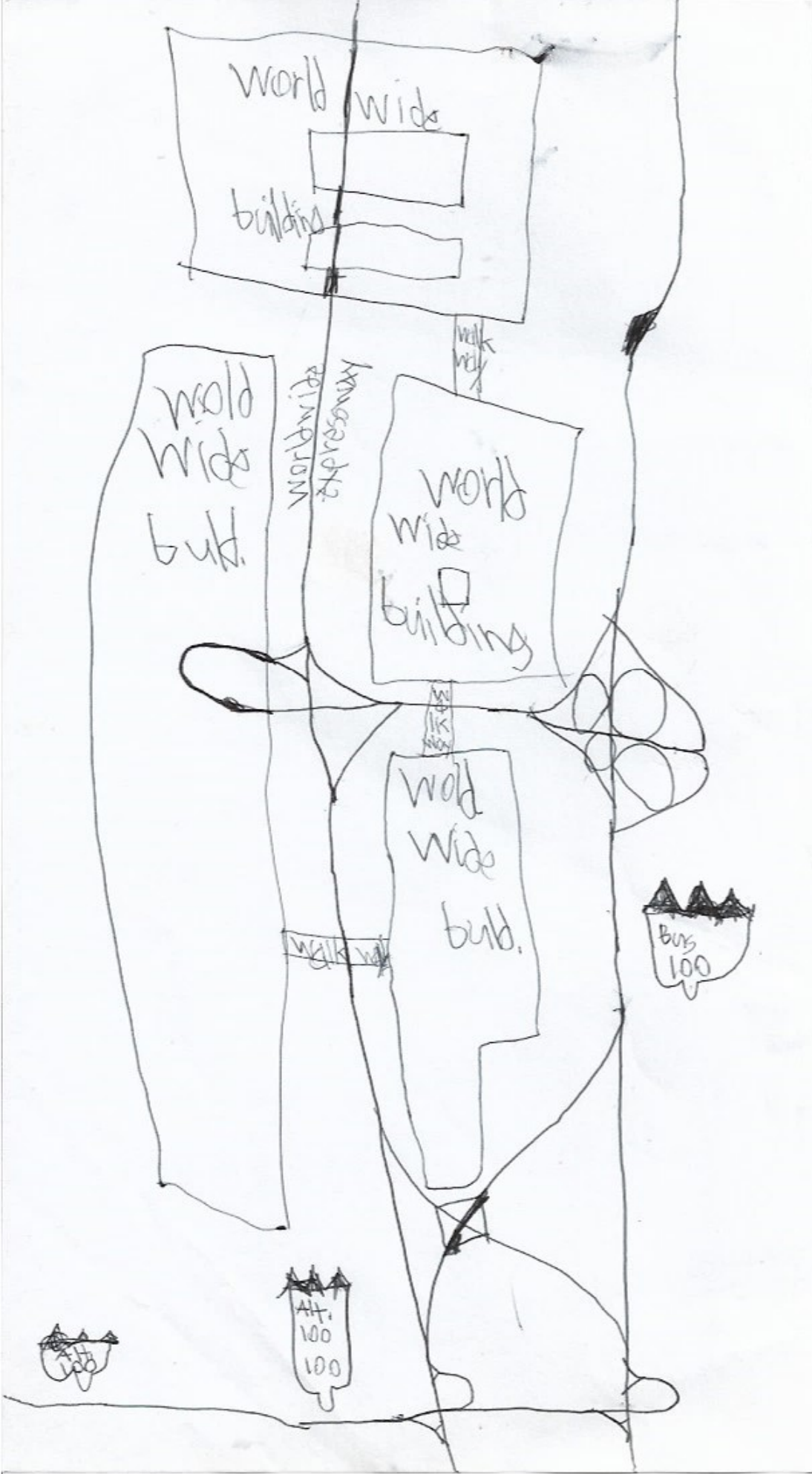
World wide
building

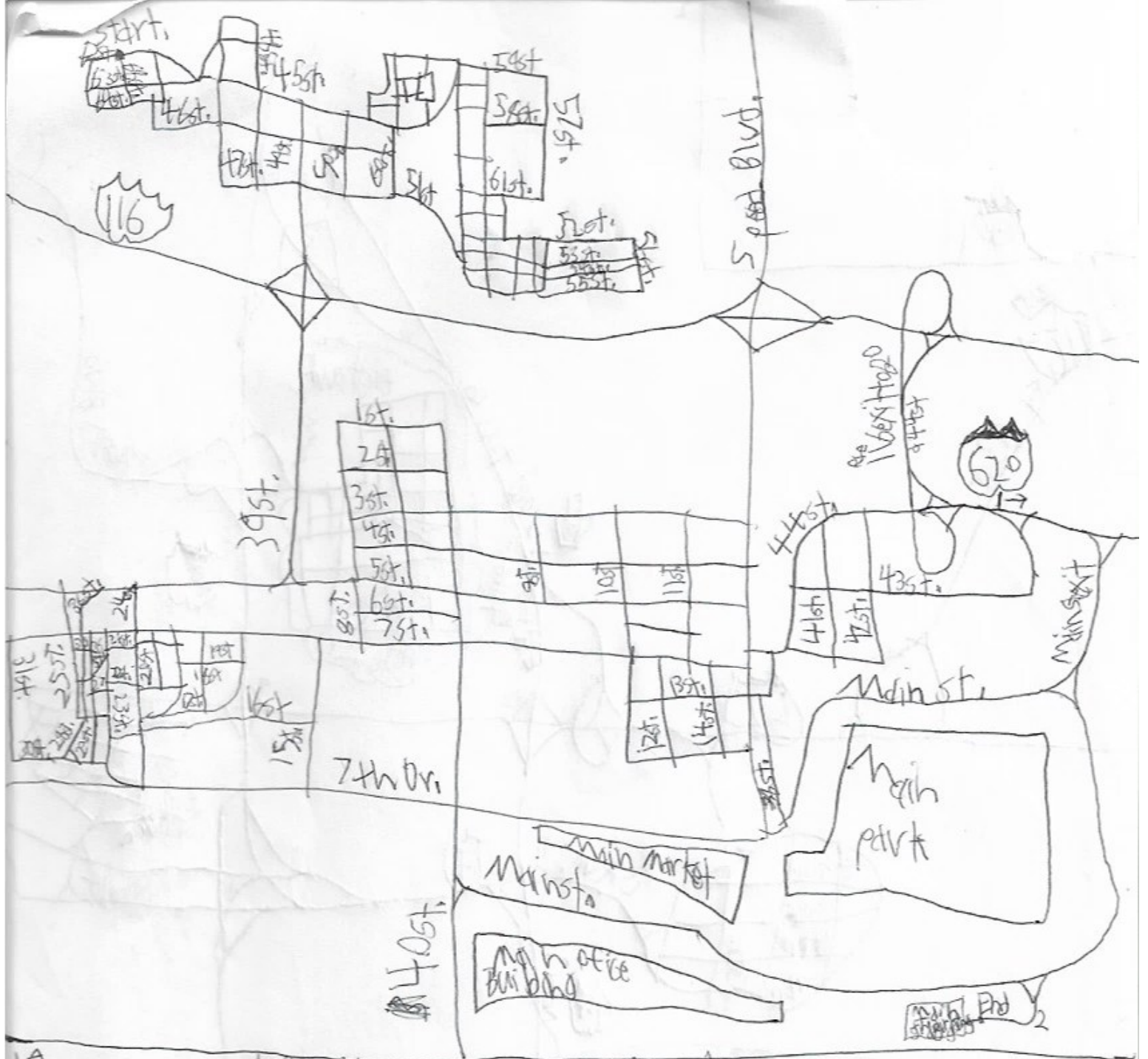
World wide
build.

Bus
100

Alt.
100
100

100

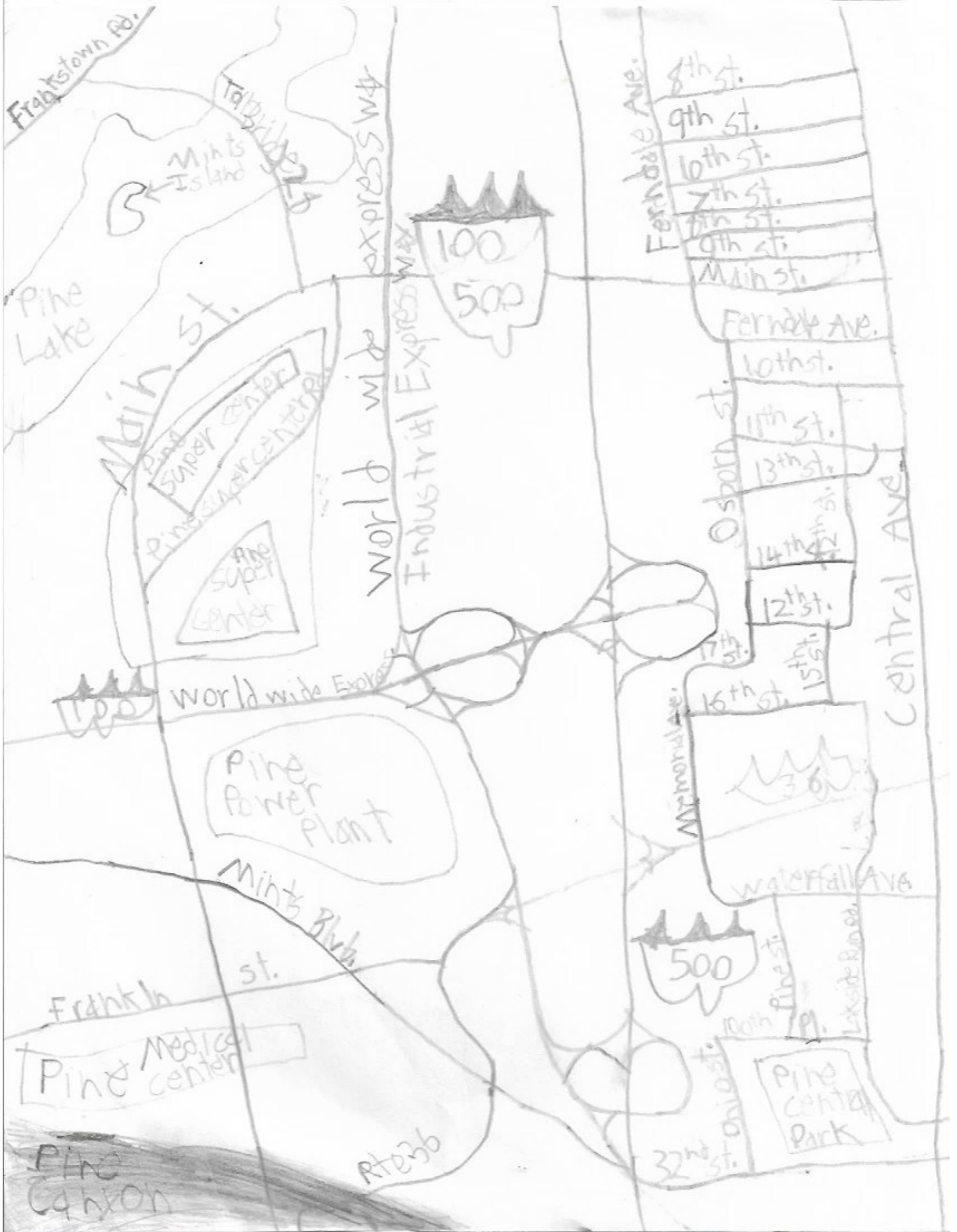


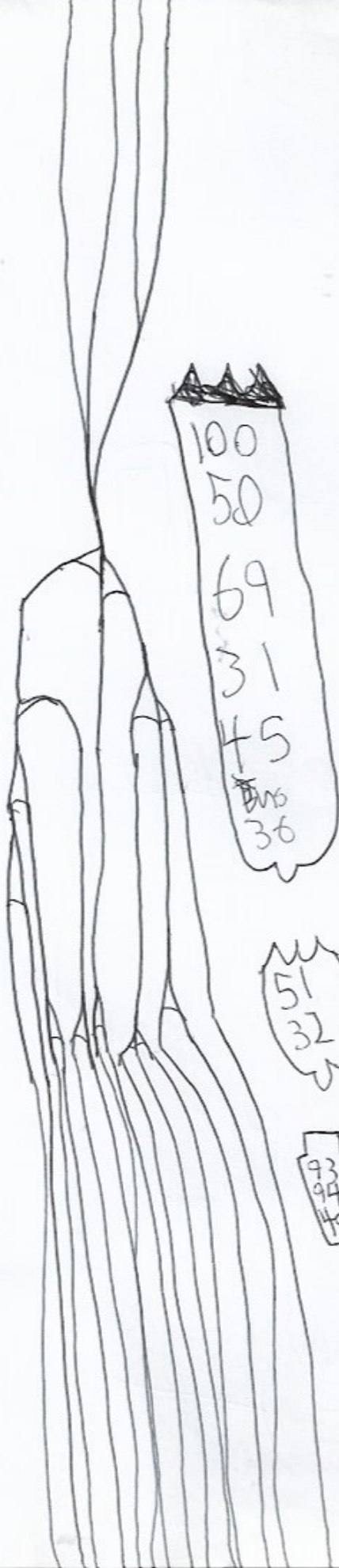


	miles		miles
1. Start east on 2nd	0.1 miles	9. turn left on parking road	0.2 miles
2. 62st. becomes 45st	0.3 miles	10. End grades	0.0 miles
3. turn on 39st (right)	1.0 mile	2A	
4. merge ramp to 116 E	0.2 miles	1. go right main	2.0 miles
5. stay on 116 until E	2.0 miles	2. continue on	5.0 miles
merge Speed Blvd. Exit	0.9 miles	of combined directions	
Speed Blvd. S	3.0 miles	and if Rt 116	
left on main street	5.0 miles	3. turn on 116 E	6.2 miles
		4. stay on 116	



1A-2B	miles	2A	miles	time	3A	miles	time
5. US Rte 116 to become 63st	2.0 miles	9. start then one exit	1.0 miles	2.5 1A			
6. turn left on 63st	1.0 mile	10. go on rts south	D. 5 miles	1.00 2A			time 1A-2B
7. turn left on 13	2.0 miles	11. take exit right stay right	0.9 miles	+ 0.30 2B	turn on 13	3.0 miles	3.00
8. stay on left turn left on Exit	2.0 miles	12. End at parking Sweet Blvd	1.0 miles	3.45	2. turn right on 14	2.0 miles	+ 1.00
					3. 14 to town	1.3 miles	
					4. go to 13A via A to stop.	0.6 miles	4.45

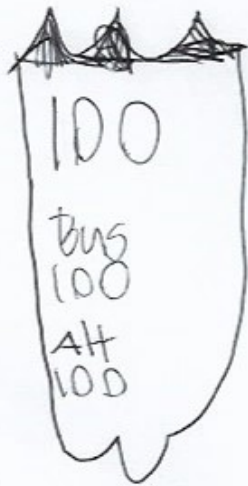




100
50
69
31
45
Bms
30

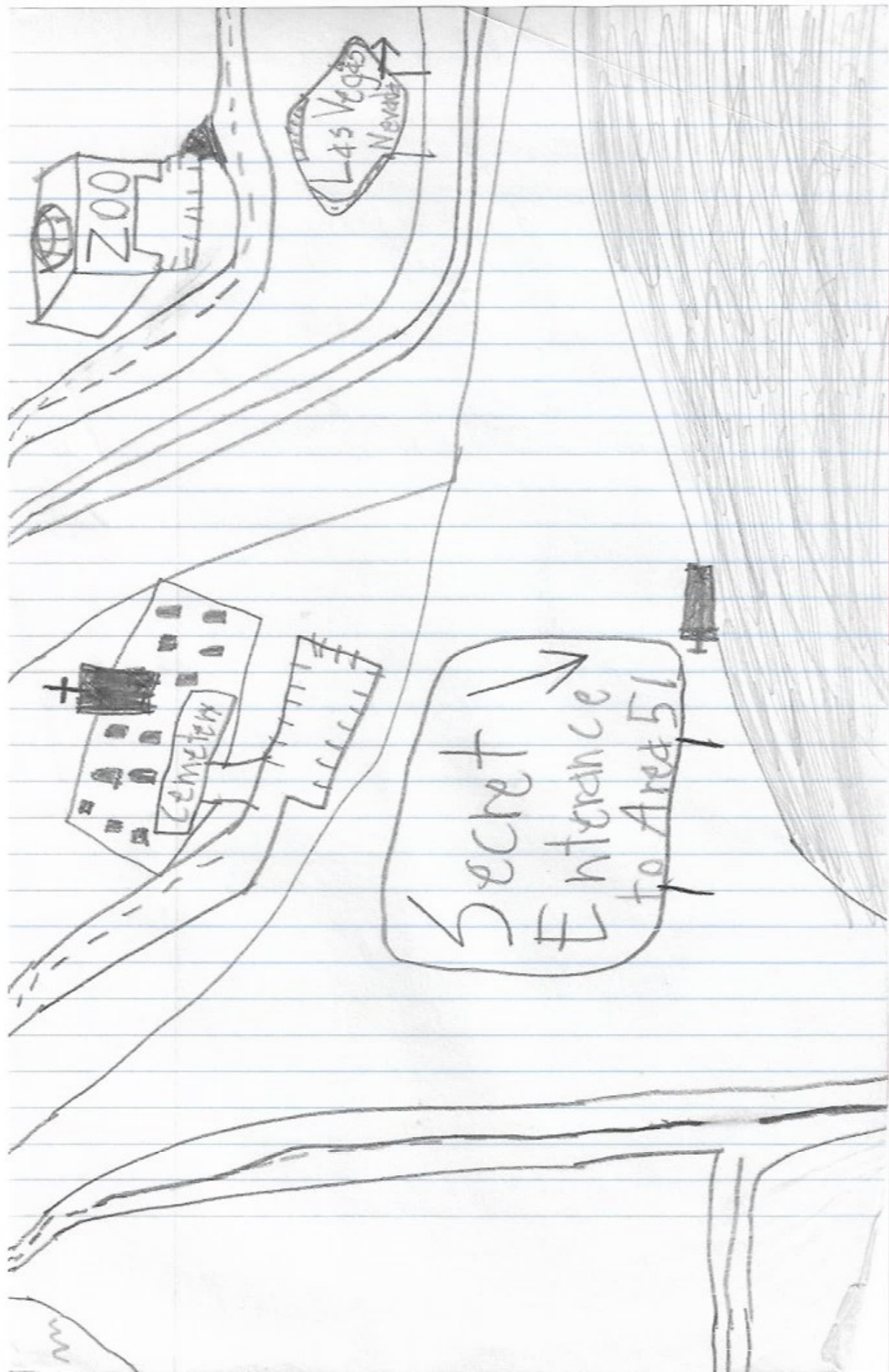
51
32

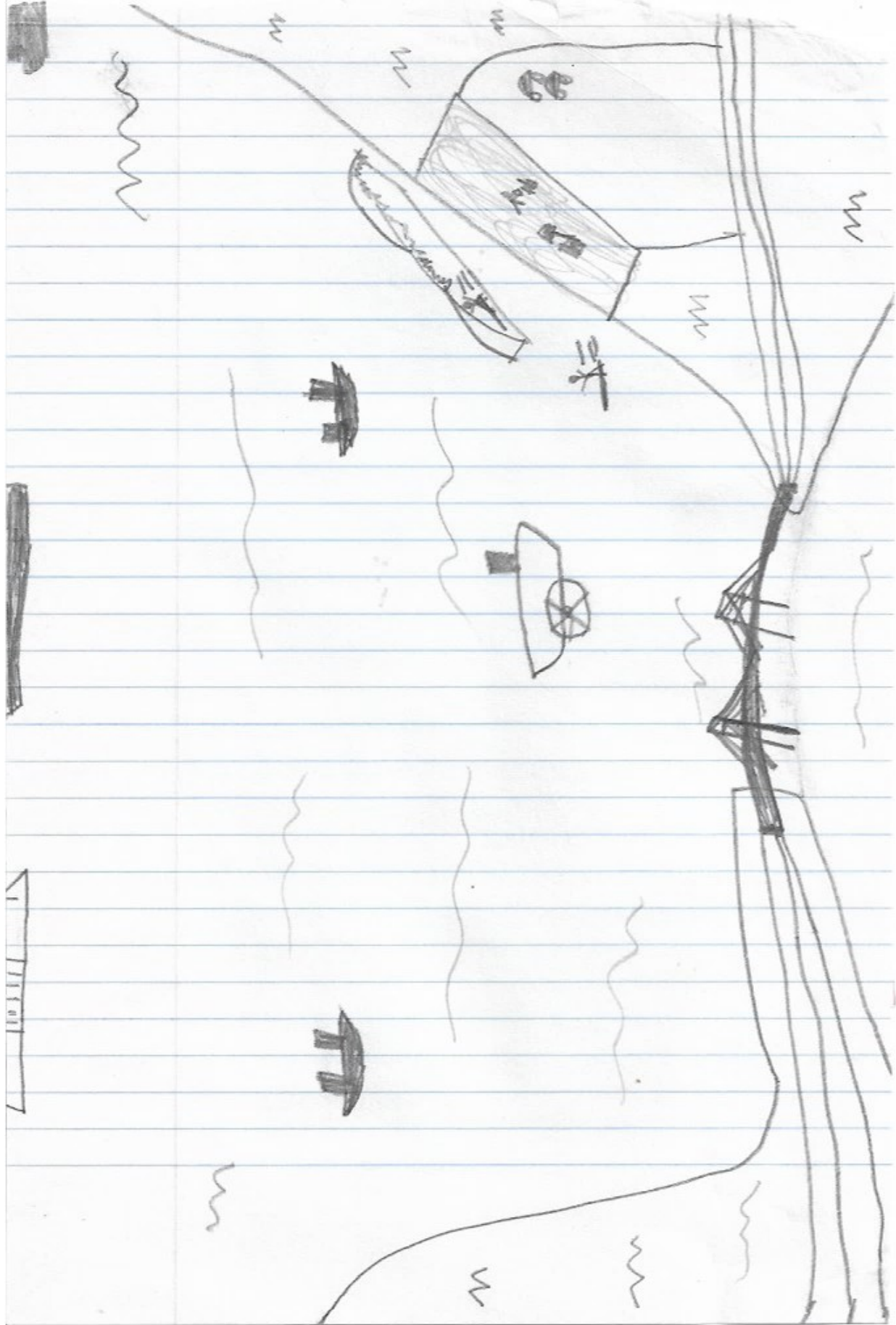
93
94
49

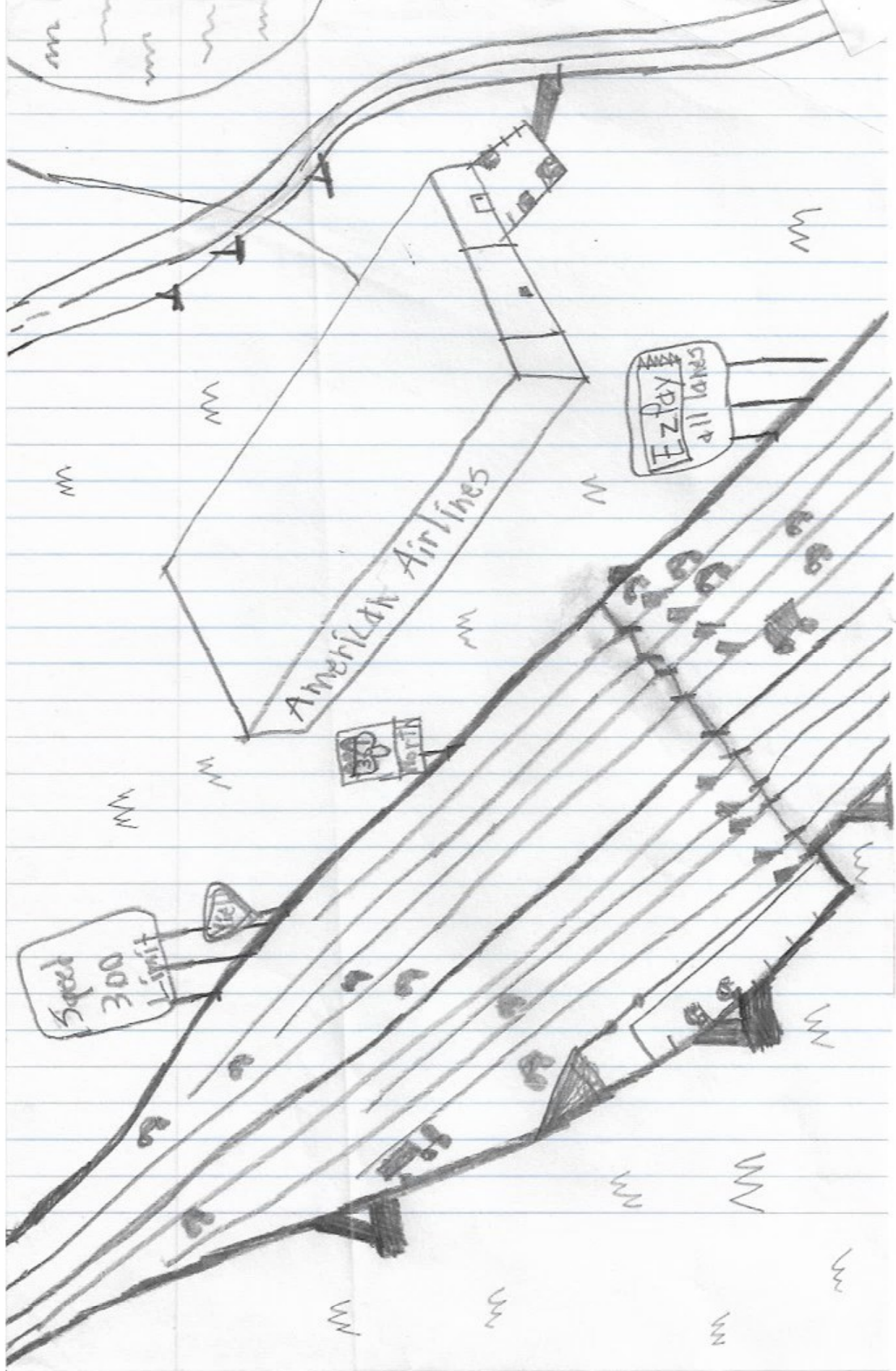


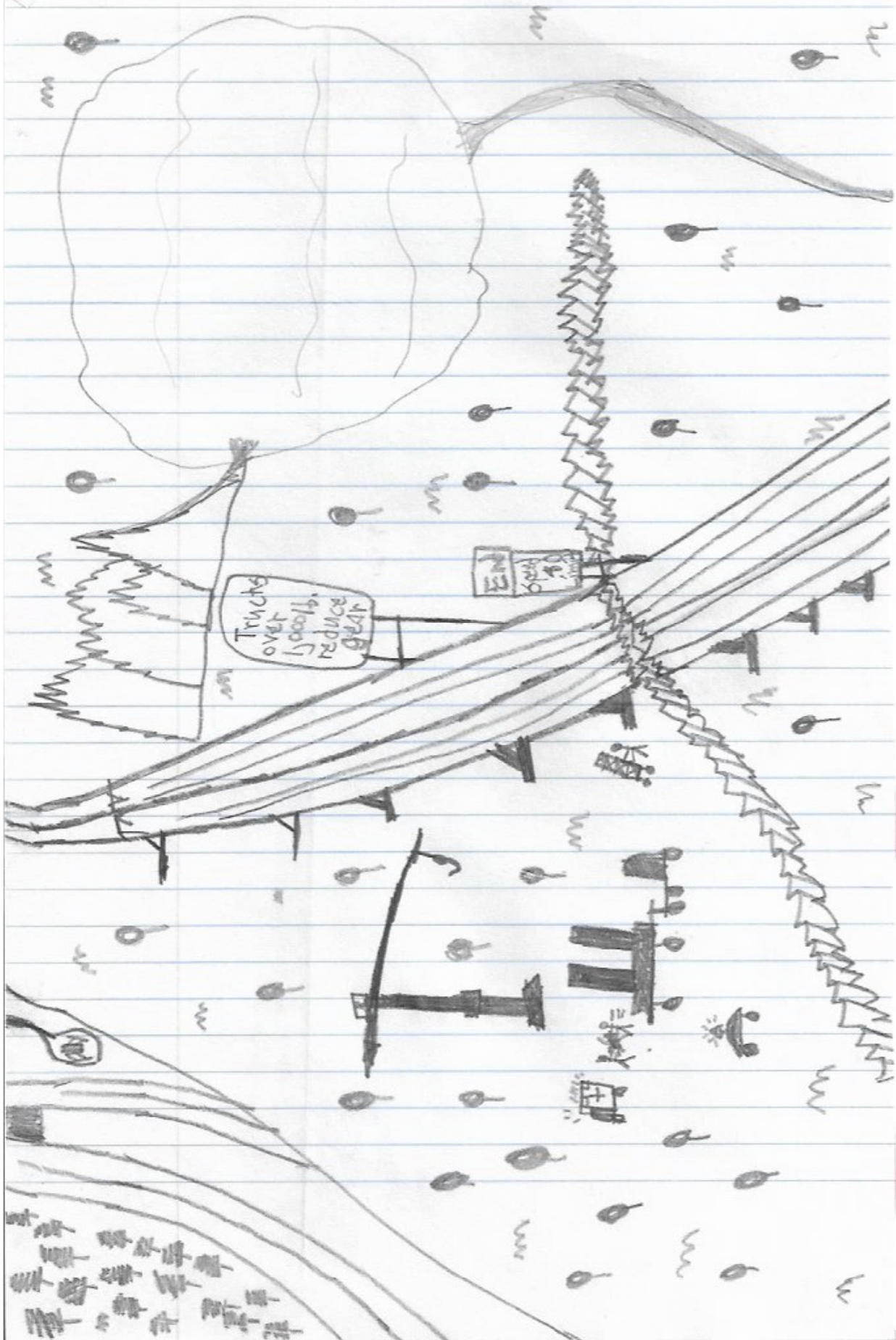
H = tunnel holder

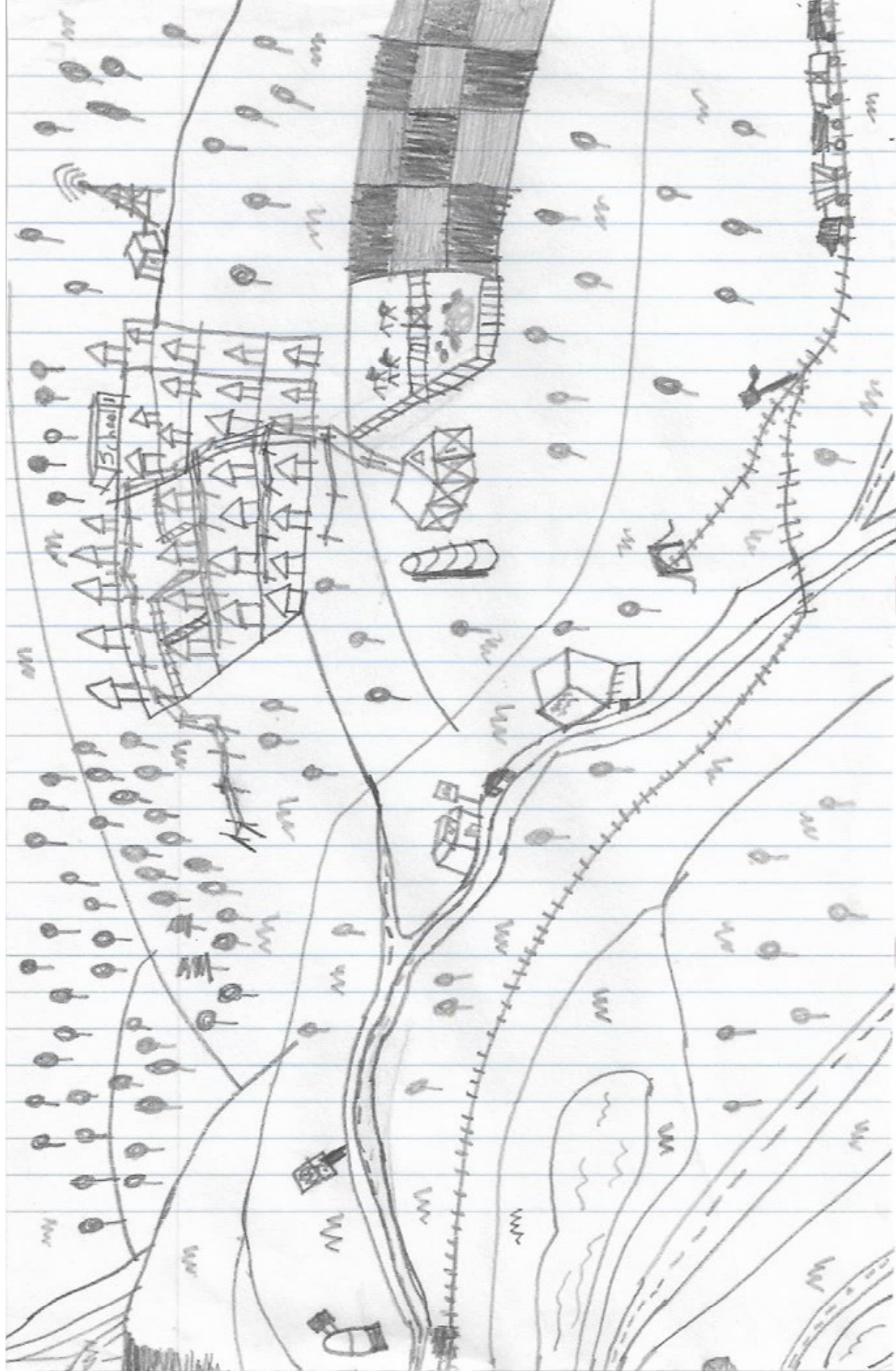




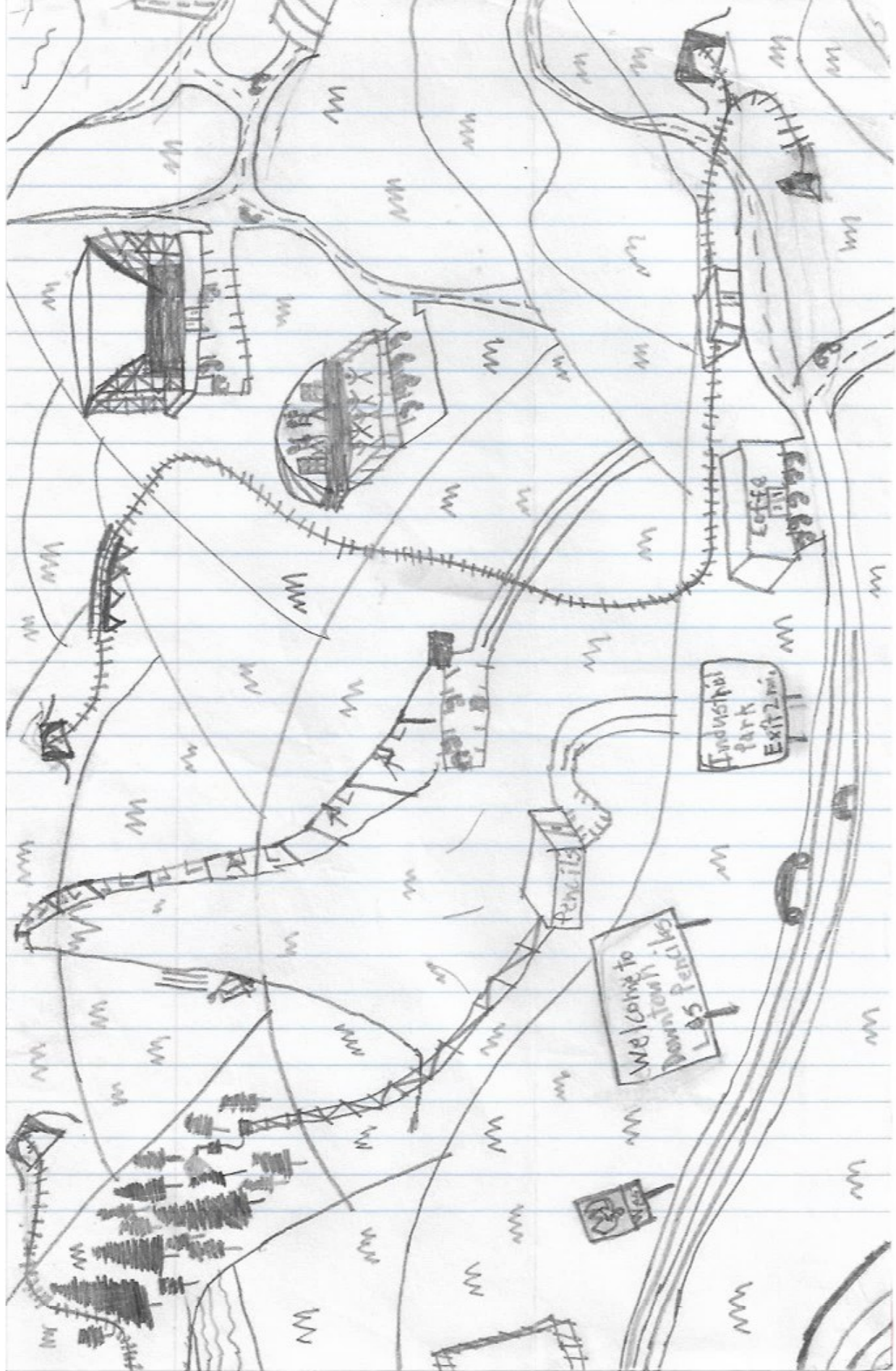




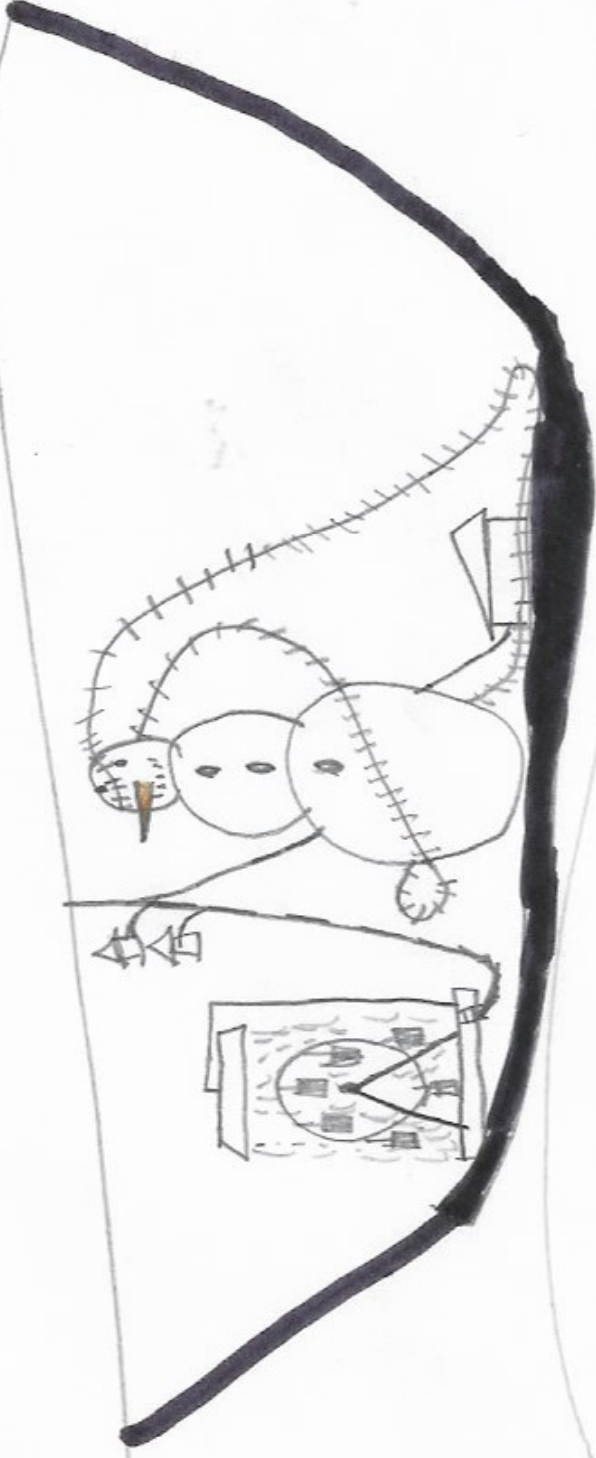




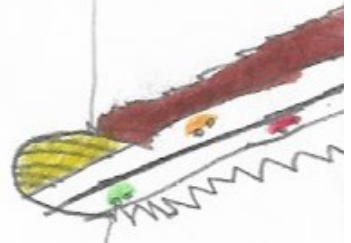






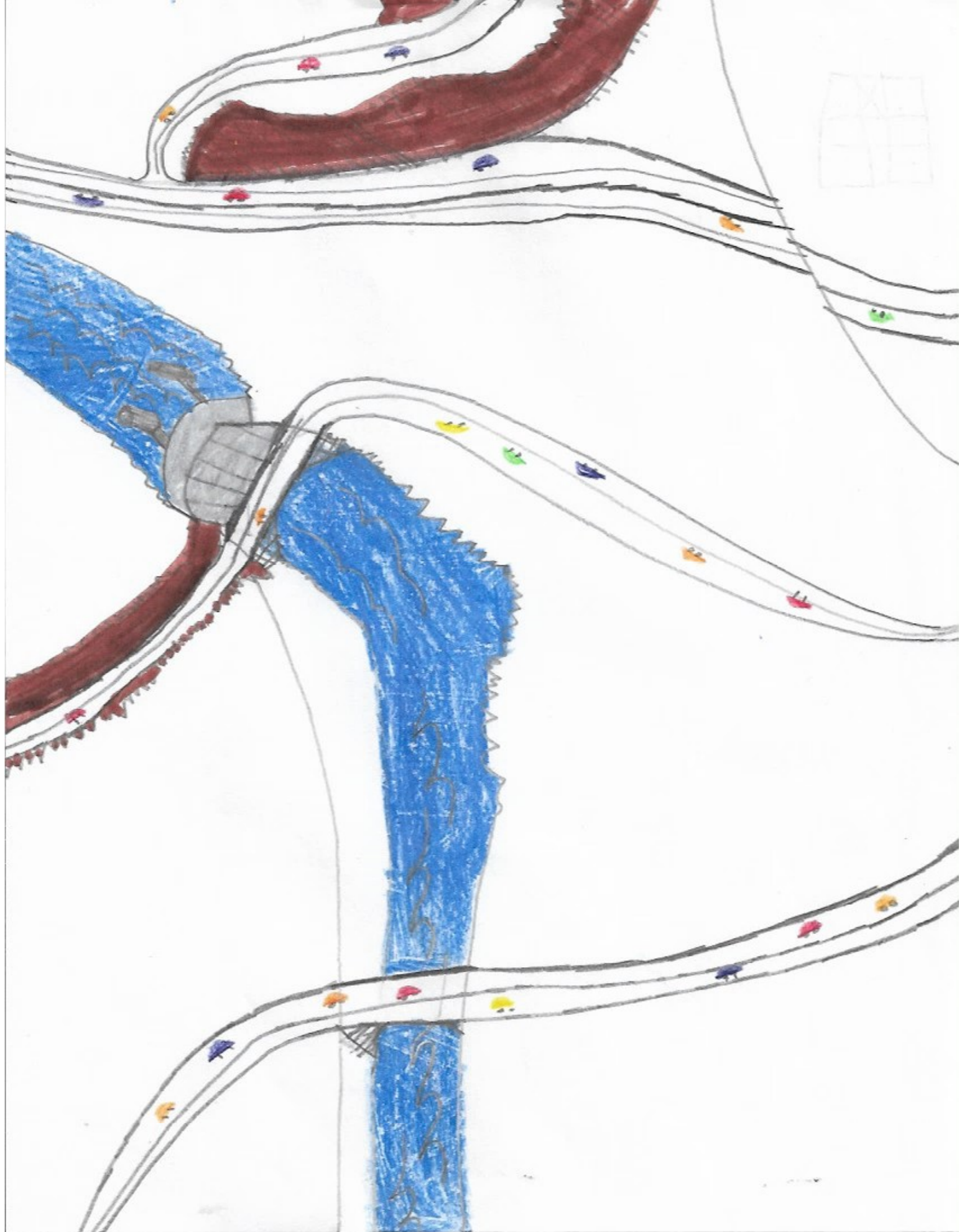


合名

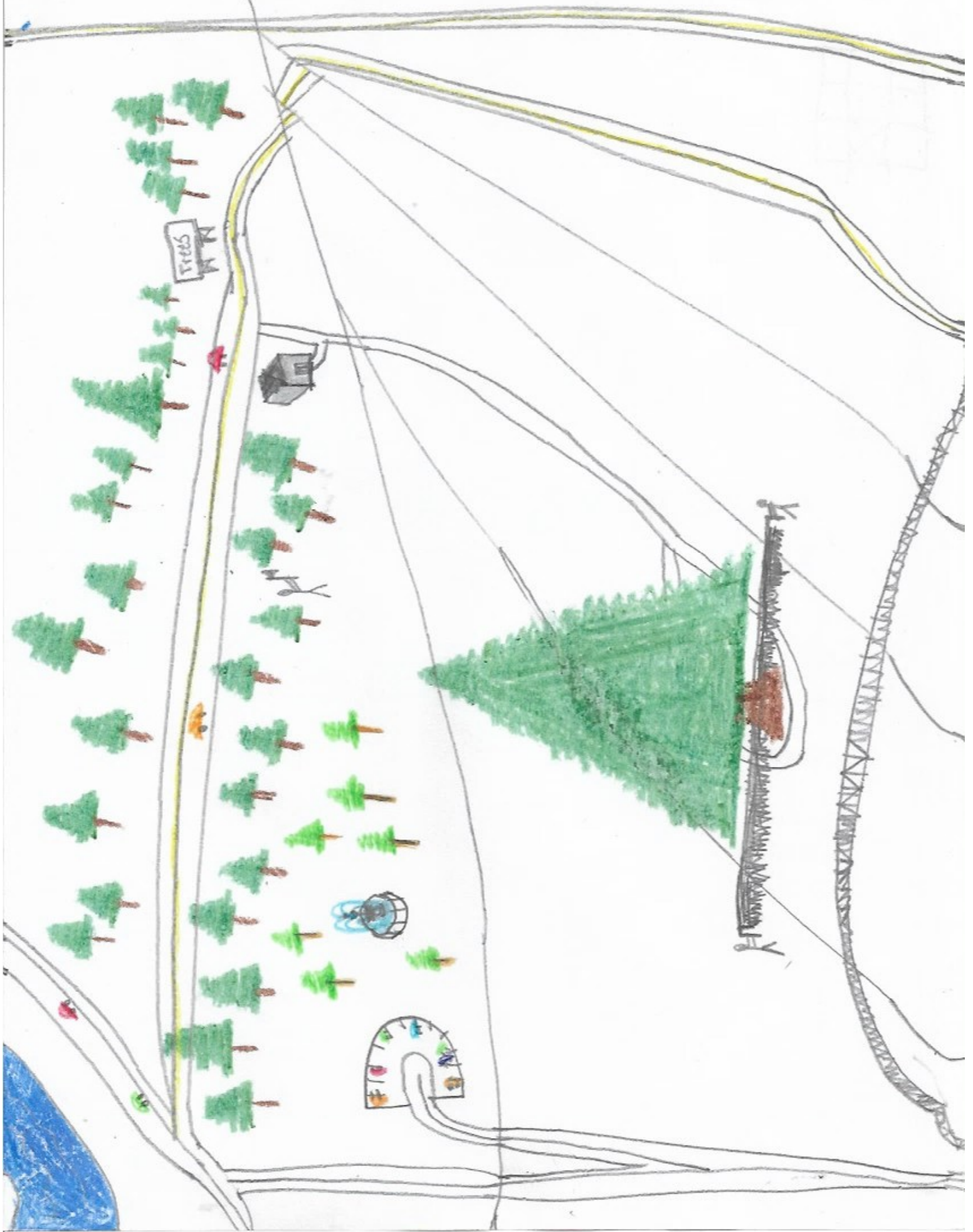


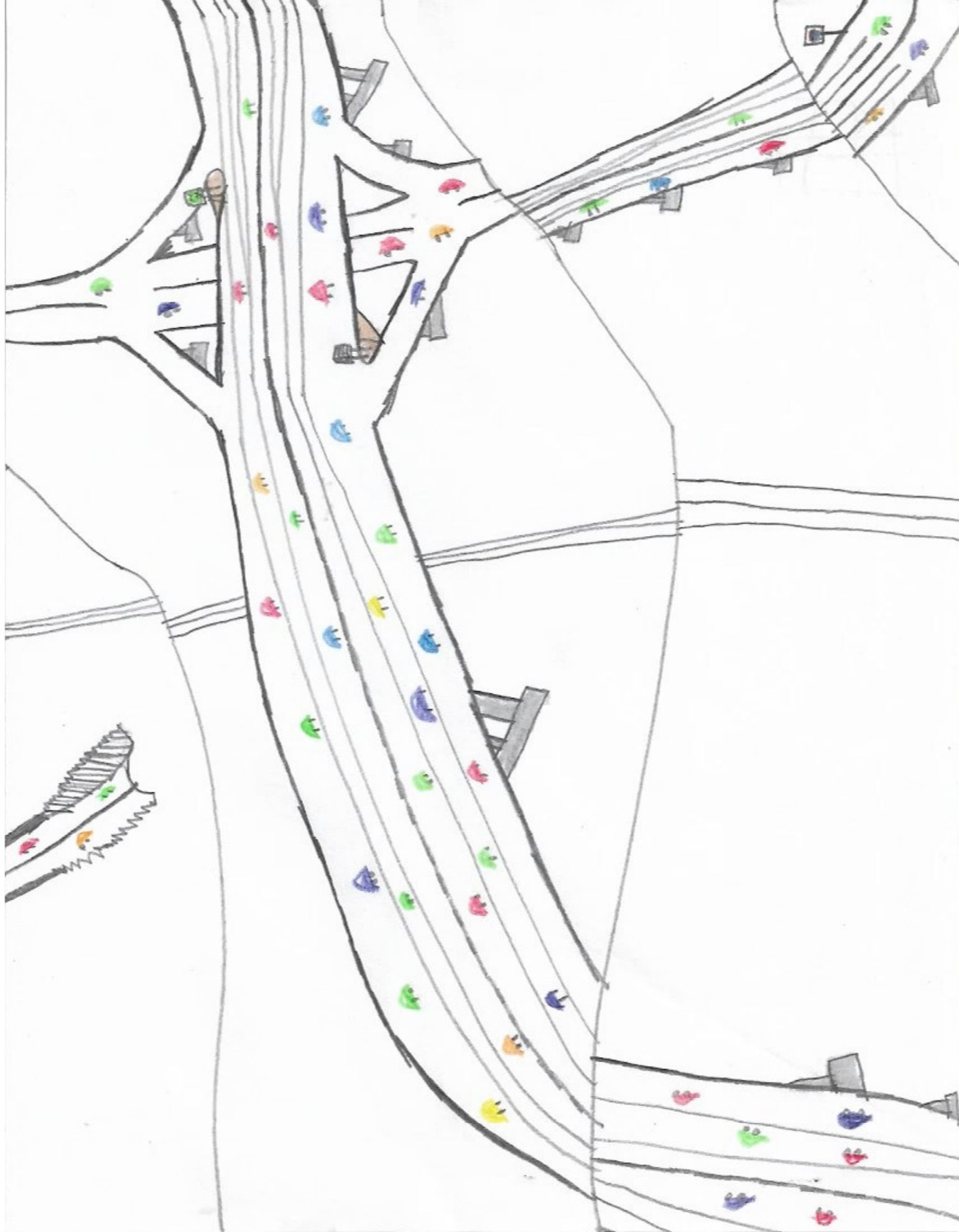






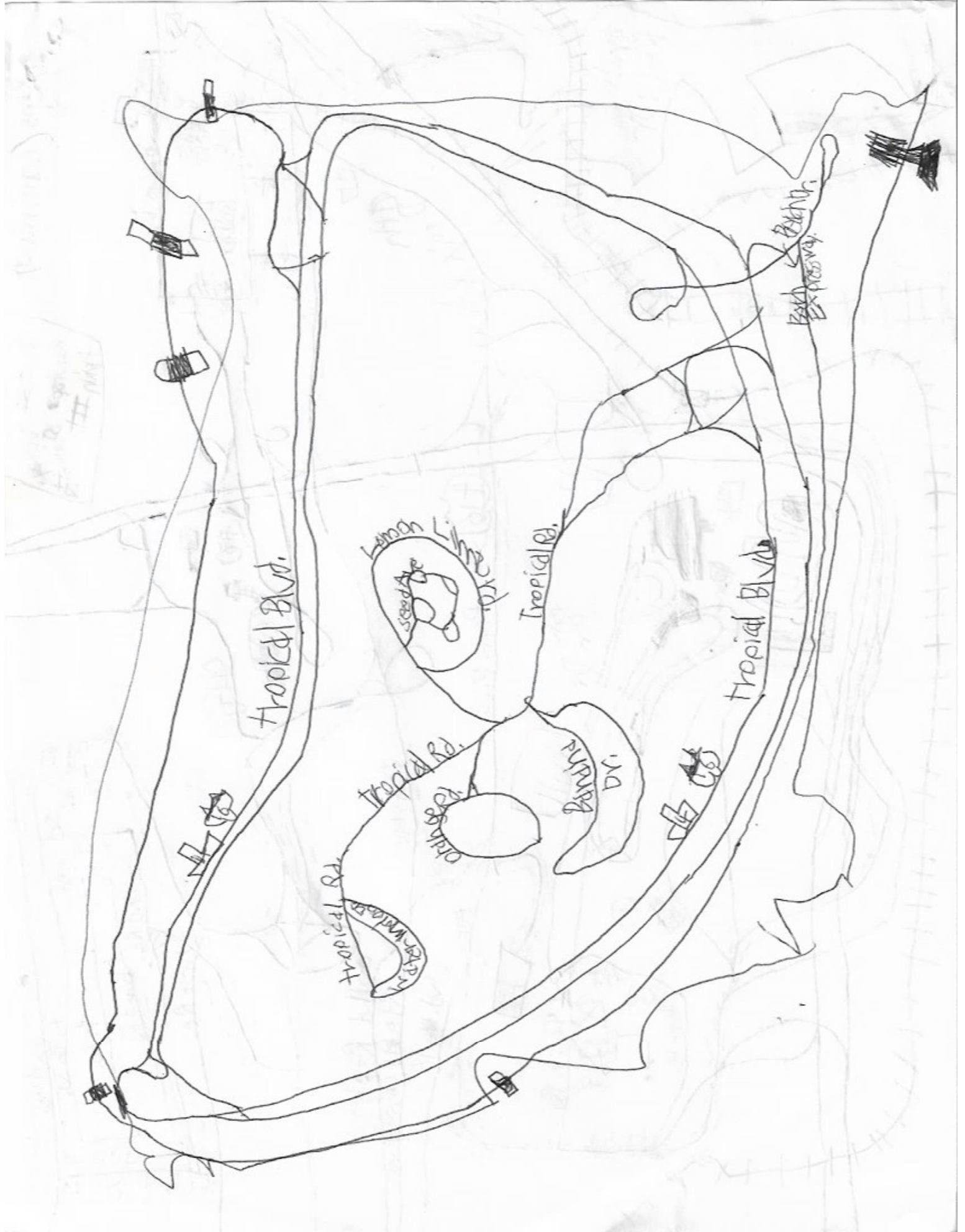












Maps (continued)

Bus = Subway
Busstop = Station
Train = #

